

# Installation Manuals

## Android Studio Installation

### Android Studio Installation

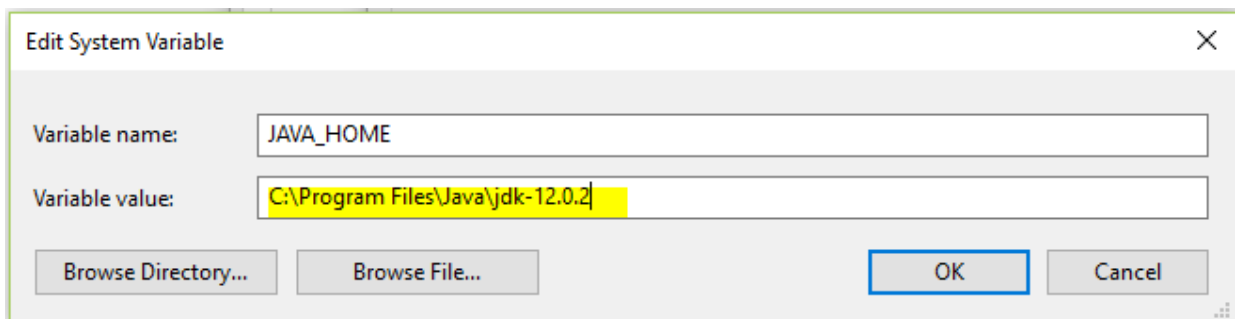
Download the following:

0. **Android Studio** : <https://developer.android.com/studio>
1. **JDK** :  
<https://www.oracle.com/technetwork/java/javase/downloads/jdk12-downloads-5295953.html>

### Pre - Installation

#### Install **Java Development Kit (JDK)**

0. Before installing Android Studio, install first Java Development Kit(JDK). Ensure to install version 1.8 and above. You can check your JDK version by typing "**javac -version**" on command line.
1. Run the installer and follow the instruction.
2. Include JDK's "**bin**" directory in the System Variable **PATH**
  - a. Add new variable under **System variables**, value should be the path to JDK's bin



- b. Add this to **PATH** variable in System Variables "**%JAVA\_HOME%\bin**"



# Installation Manuals

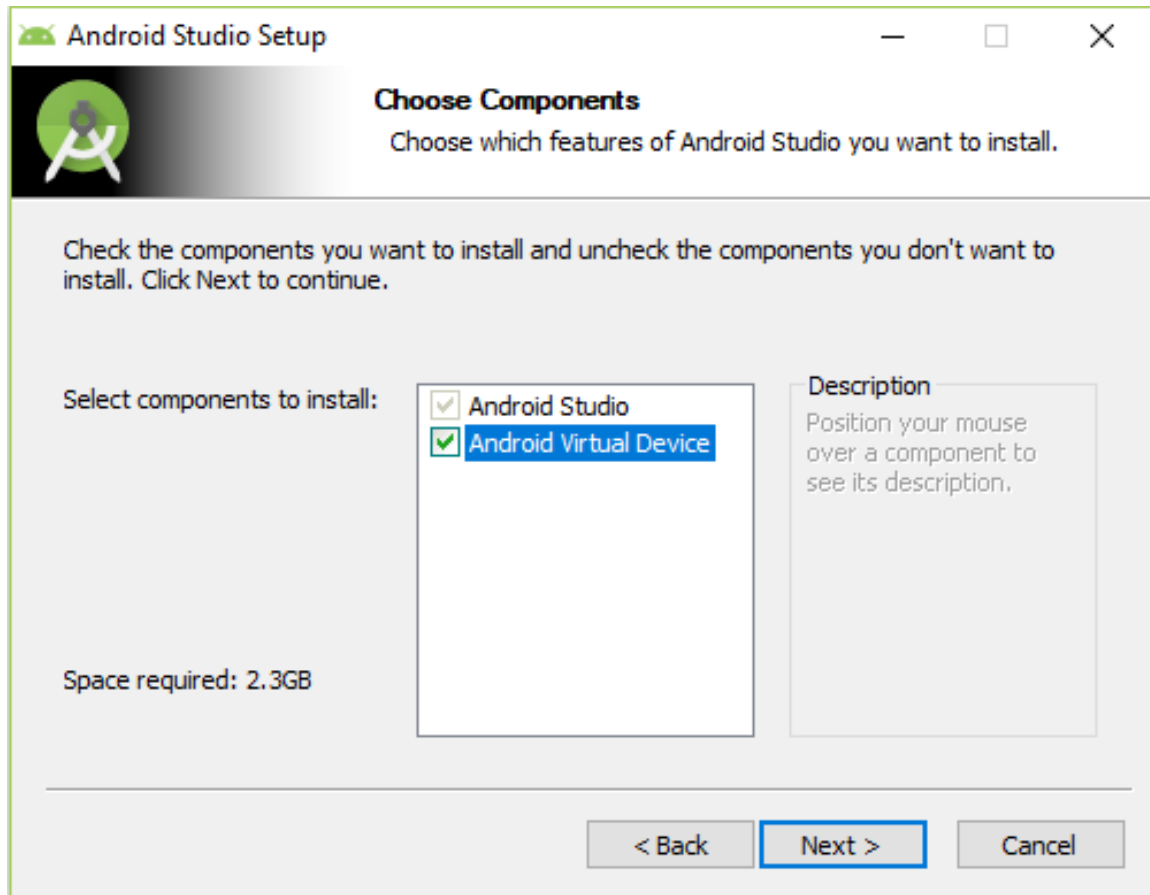
```
Command Prompt
Microsoft Windows [Version 10.0.17134.1006]
(c) 2018 Microsoft Corporation. All rights reserved.

C:\Users\PA Henoridez>javac
Usage: javac <options> <source files>
where possible options include:
  @<filename>           Read options and filenames from file
  -Akey[=value]         Options to pass to annotation processors
  --add-modules <module>(,<module>)*
                        Root modules to resolve in addition to the initial modules, or all modules
                        on the module path if <module> is ALL-MODULE-PATH.
  --boot-class-path <path>, -bootclasspath <path>
                        Override location of bootstrap class files
  --class-path <path>, -classpath <path>, -cp <path>
                        Specify where to find user class files and annotation processors
  -d <directory>       Specify where to place generated class files
  -deprecation
                        Output source locations where deprecated APIs are used
  --enable-preview
                        Enable preview language features. To be used in conjunction with either -source or --release.
  -encoding <encoding> Specify character encoding used by source files
  -endorseddirs <dirs>  Override location of endorsed standards path
  -extdirs <dirs>       Override location of installed extensions
  -g                    Generate all debugging info
  -g:{lines,vars,source}
                        Generate only some debugging info
  -g:none               Generate no debugging info
  -h <directory>
                        Specify where to place generated native header files
  --help, -help, -?    Print this help message
  --help-extra, -X     Print help on extra options
```

## Android Studio Installation

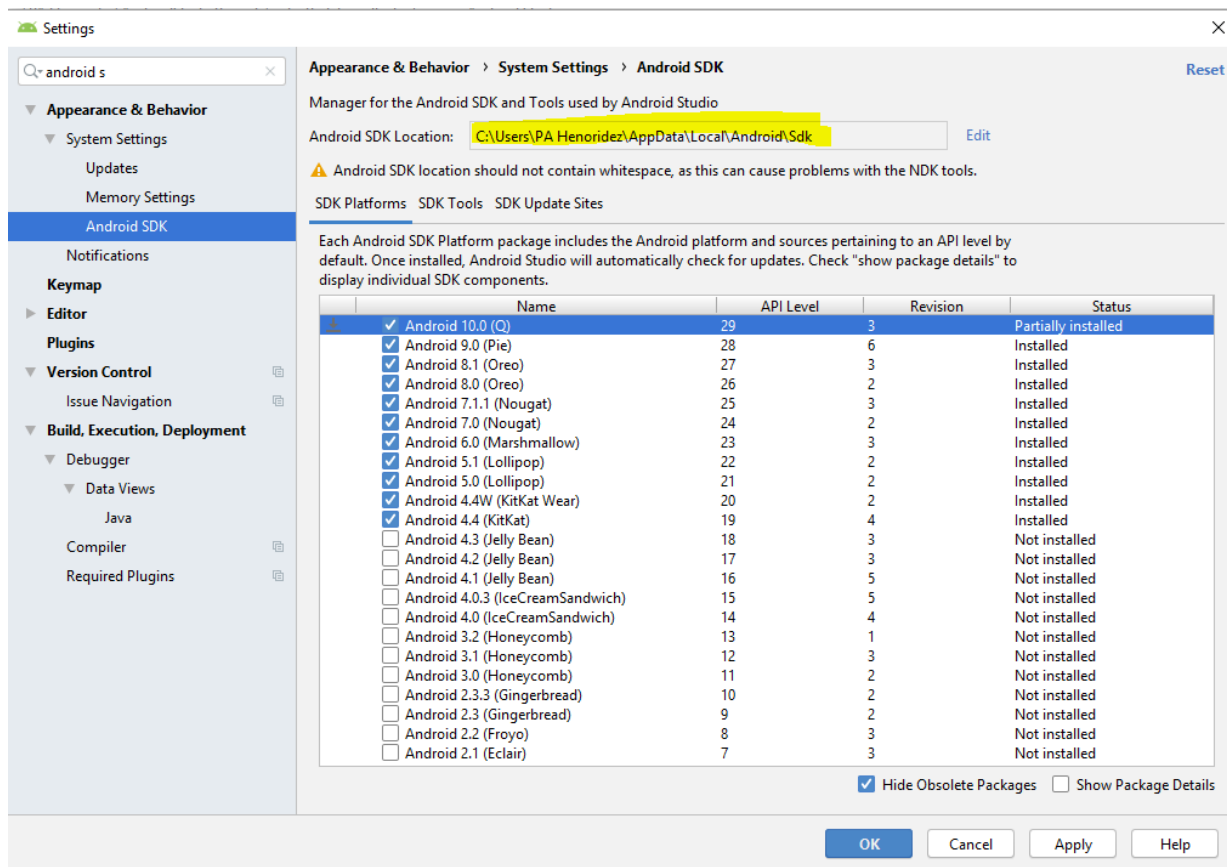
0. Run the installer for Android Studio
1. Check "**Android Virtual Device**" to install emulator for testing

# Installation Manuals



2. Select path to install or click **Next** then **Install**
3. Click **Finish** and **Run Android Studio**
4. Update components if necessary
5. Go to **File > Settings > Appearance & Behavior > System Settings > Android SDK**, install Android version by checking the checkboxes and click **Apply**

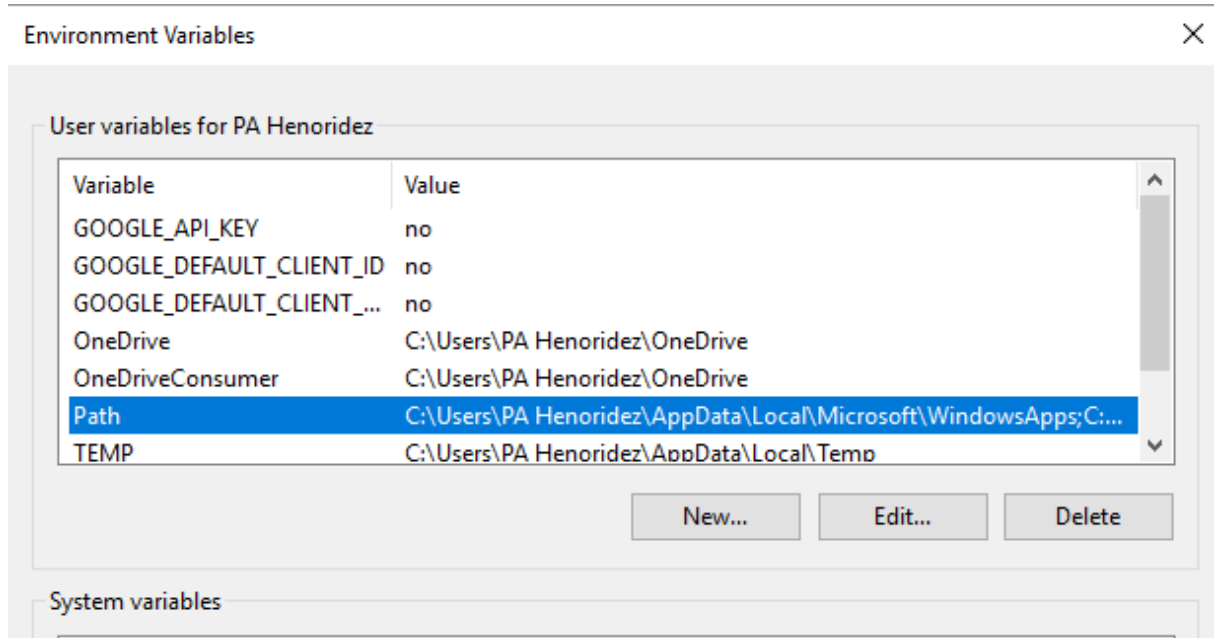
# Installation Manuals



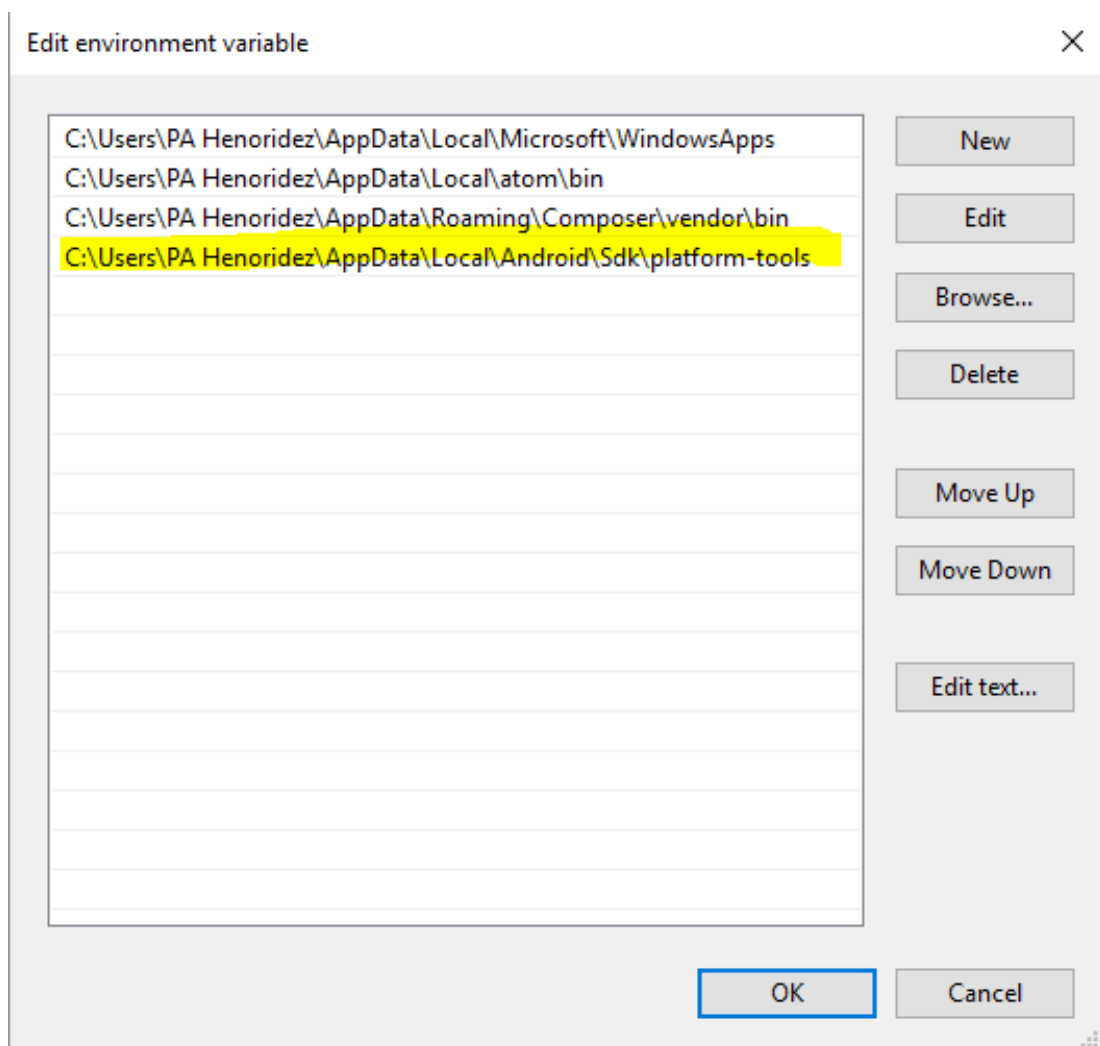
6. With the above image, copy the **Android SDK Location**

7. Under **User variables**:

# Installation Manuals



8. Add the copied path in the **Path** variable



9. To verify, type "**adb**" on cmd and should show something similar below

Page 6 / 8

(c) 2026 robi <test@gmail.com> | 2026-04-04 16:05

URL: /content/56/131/en/android-studio-installation.html

# Installation Manuals

```
Command Prompt
Microsoft Windows [Version 10.0.17134.1006]
(c) 2018 Microsoft Corporation. All rights reserved.

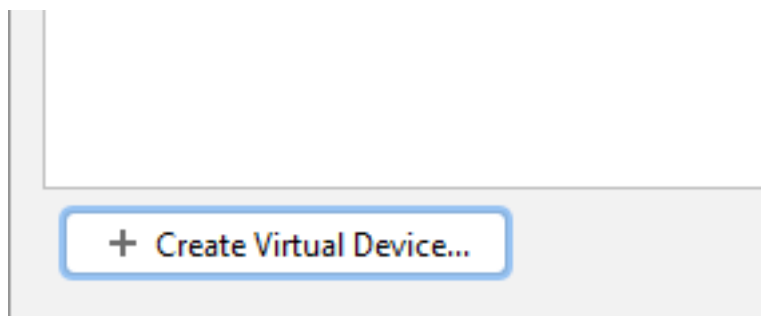
C:\Users\PA Henoridez>adb
Android Debug Bridge version 1.0.41
Version 29.0.4-5871666
Installed as C:\Users\PA Henoridez\AppData\Local\Android\Sdk\platform-tools\adb.exe

global options:
-a          listen on all network interfaces, not just localhost
-d          use USB device (error if multiple devices connected)
-e          use TCP/IP device (error if multiple TCP/IP devices available)
-s SERIAL   use device with given serial (overrides $ANDROID_SERIAL)
-t ID       use device with given transport id
-H          name of adb server host [default=localhost]
-P          port of adb server [default=5037]
-L SOCKET   listen on given socket for adb server [default=tcp:localhost:5037]

general commands:
devices [-l]    list connected devices (-l for long output)
help           show this help message
version        show version num

networking:
connect HOST[:PORT]  connect to a device via TCP/IP
disconnect [[HOST]:PORT] disconnect from given TCP/IP device, or all
forward --list       list all forward socket connections
forward [--no-rebind] LOCAL REMOTE
forward socket connection using:
tcp:<port> (<local> may be "tcp:0" to pick any open port)
```

10. In Android Studio, under **Tools > AVD Manager**, click **Create Virtual Device**



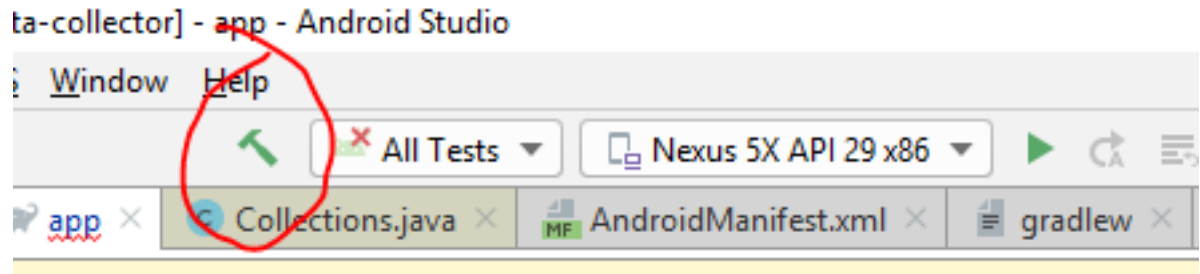
11. Choose desired device, then **Next**, click **Download** on version the device is available for test run, this will download files and might take a long time and then click **Finish**

## Some Stuff

### Build the project

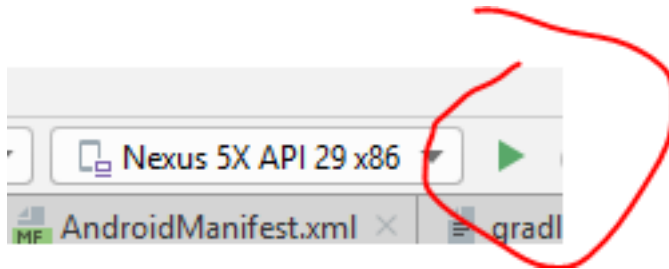
0. Clicking this will Build and compile the files and create an APK

# Installation Manuals

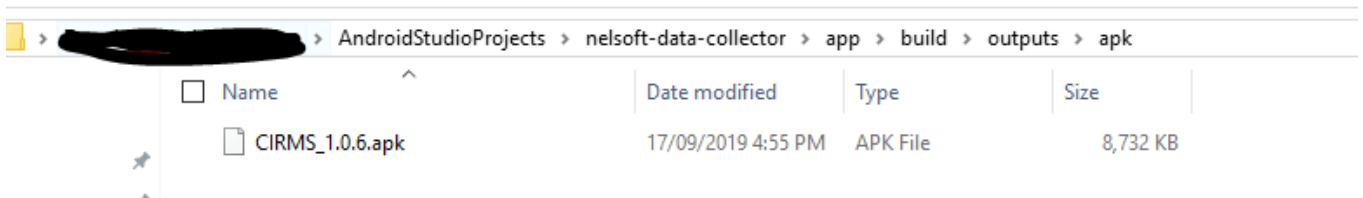


## Running the project

0. Clicking this will run the project in the emulator with the desired device.



## Finding the APK



Unique solution ID: #1131  
Author: Mary Nicole Quirabu  
Last update: 2019-09-19 12:18